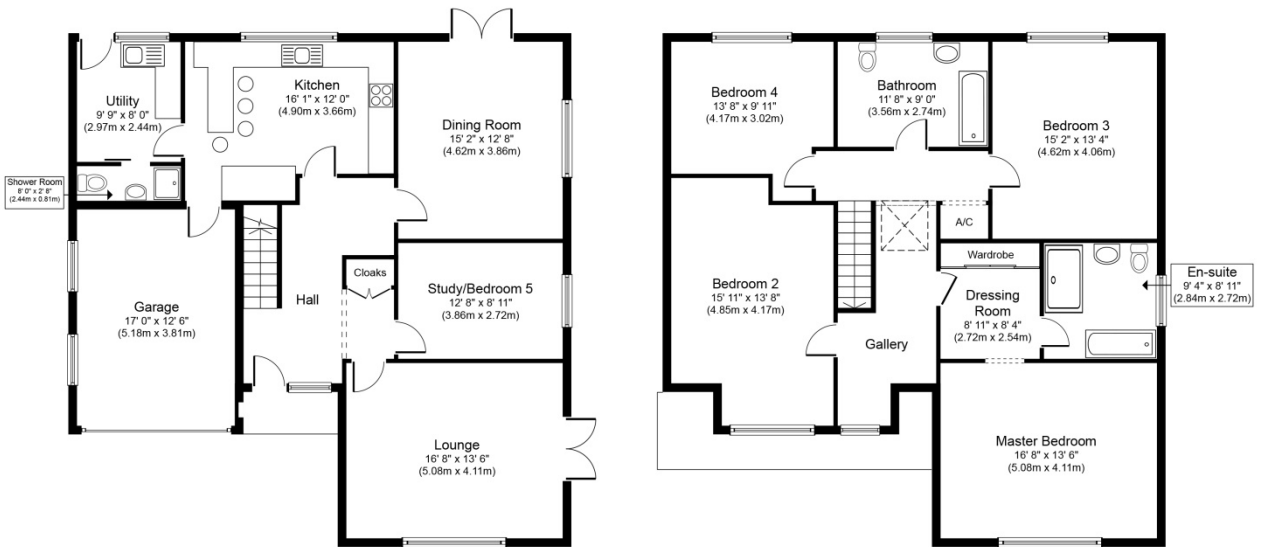


3 RUE LES JOY

FLOOR PLAN



Ground Floor
Approximate Floor Area
1,227 sq. ft.
(114.0 sq. m.)

First Floor
Approximate Floor Area
1,227 sq. ft.
(114.0 sq. m.)

Whilst every attempt has been made to ensure the accuracy of the floor plan contained here, measurements of doors, windows, rooms and any other items are approximate and no responsibility is taken for any error, omission, or mis-statement. This plan is for illustrative purposes only and should be used as such by any prospective purchaser or tenant. The services, systems and appliances shown have not been tested and no guarantee as to their operability or efficiency can be given.

Copyright V360 Ltd 2016 | www.virtual360.net

Alderney Estates

Chartered Surveyors & Estate Agents

01481 823110

www.alderneyestates.co.uk



RICS

the mark of
 property
 professionalism
 worldwide